



A T W A T E R <sup>TM</sup>

PJ'S FINEST CORPORATE  
OFFICE TOWERS

PARAMOUNT  
PROPERTY



## PJ's Finest Corporate Office Towers

---

True to its title, ATWATER's stratified office towers empowers businesses with an exclusive office suite in PJ's vibrant epicentre.

This master-planned mixed integrated development possesses the right formula to cater to various business needs, while enjoying optimum connectivity in a central location.

## Optimally Efficient & Sustainably Designed

---

ATWATER's efficient layout allows it to seamlessly adapt to all business requirements and needs, offering a versatile workspace that caters to various industries and practices.

While footsteps away lie pockets of open courtyards, verdant boulevards and lush concourse areas that truly embodies the work-life balance concept by offering occupants an escape from the bustle of work.



## Privacy & Exclusivity

---

Businesses now have a chance to own one of these low-density Premier Suites and Executive Suites with sizes ranging from 1,400 sf to 30,000 sf.

A Private Lift Lobby that's exclusively yours greets clientele to a grand welcome even before stepping into your office.

## Seamless Connectivity

---

Served by an established network of major highways, LRT and MRT connectivity, Atwater's strategic location ensures that businesses are easily accessible.

Conceived as a pedestrian-friendly master-planned development, the Office Suites are connected to the adjacent Serviced Apartments via a dedicated link bridge.



# Mixed Integrated Development in the Heart of PJ

---



## COMMERCIAL

- 1 Office Tower A & Retail Spaces
- 2 Office Tower B & Retail Spaces
- 3 Sales Gallery

## RESIDENTIAL

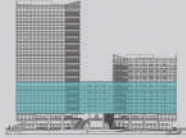
- 4 Serviced Apartments Tower 1
- 5 Serviced Apartments Tower 2

# Floor Plan

## TOWER A PREMIER SUITE

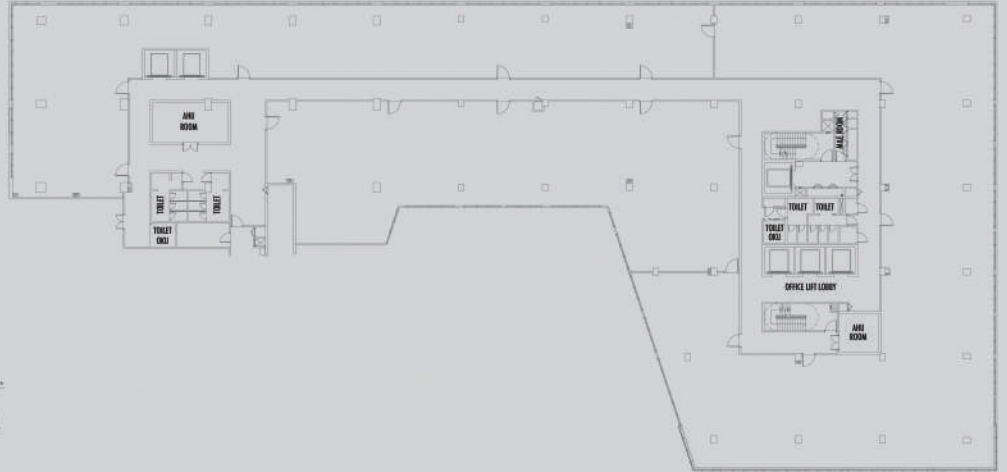
### LEVEL 2 - 5

Built-up: 30,077 sf



Tower B Tower A

Tower B Tower A



## TOWER A PREMIER SUITE

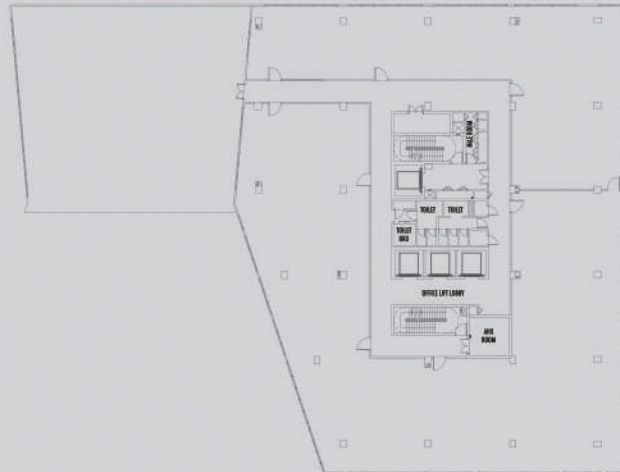
### LEVEL 6

Built-up: 21,417 sf



Tower B Tower A

Tower B Tower A



## TOWER A EXECUTIVE SUITE

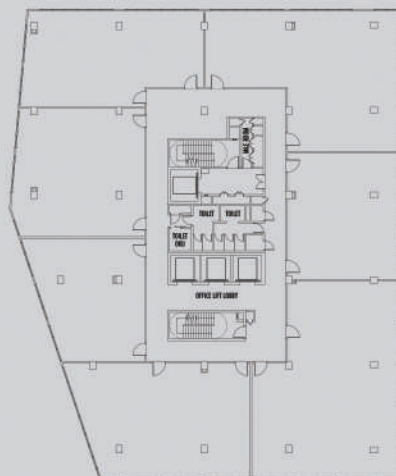
### LEVEL 7 - 8

Built-up: 1,384 - 2,844 sf



Tower B Tower A

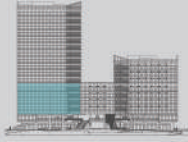
Tower B Tower A



## TOWER B EXECUTIVE SUITE

### LEVEL 2 - 5

Built-up: 1,417 – 2,933 sf

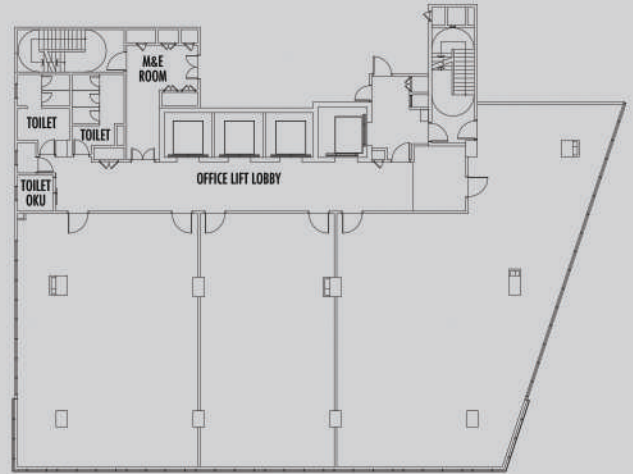


Tower B

Tower A

Tower B

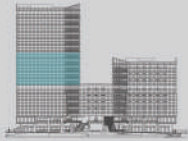
Tower A



## TOWER B EXECUTIVE SUITE

### LEVEL 6 - 10

Built-up: 1,417 – 3,298 sf

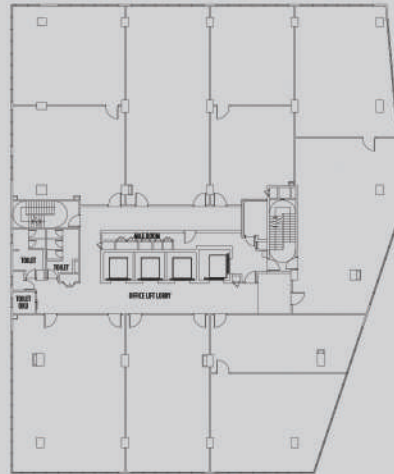


Tower B

Tower A

Tower B

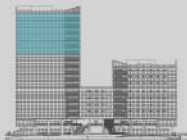
Tower A



## TOWER B PREMIER SUITE

### LEVEL 11 - 16

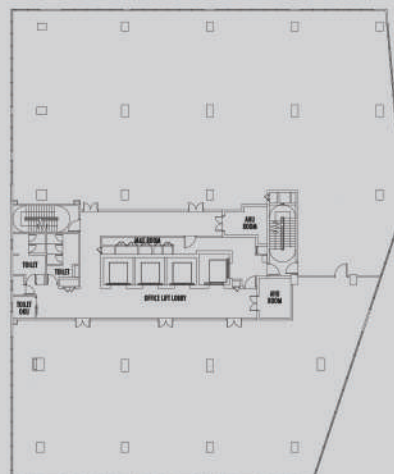
Built-up: 16,546 sf



Tower B

Tower B

Tower A



# At the Heart of It All, Connected to It All

ATWATER's strategic location in the heart of PJ's thriving residential and commercial enclave ensures it is well connected to major arterial thoroughfares in the Klang Valley, while being within close proximity to established amenities, financial institutions and eateries.



Hospitals



Shopping Centres



Schools/Colleges



Phileo Damansara  
MRT Station

# PARAMOUNT PROPERTY

## The People's Developer™

Everything that Paramount Property does is backed by its commitment to build with its customers in mind.


By engaging with its customers for feedback and keeping up with property trends, Paramount Property delivers functional and practical products that meet customers' expectations.

Today, Paramount Property is an award-winning developer with a diverse portfolio comprising townships as well as residential, commercial, retail, educational, industrial and integrated developments. It has a reputation of being the people's developer, with a track record of close to four decades for building enduring addresses in the Klang Valley, Kedah, and now in Penang.



Scan for Full Website

**Paramount Property Development Sdn. Bhd.** (587910-U)  
PT29, Jalan Universiti, Seksyen 13, 46200 Petaling Jaya, Selangor.

 Paramount Property Gallery @ ATWATER  
 ParamountPropertyMalaysia  
 paramountpropertymy

**03 2787 7938**  
paramountproperty.my

**PARAMOUNT**  
PROPERTY