

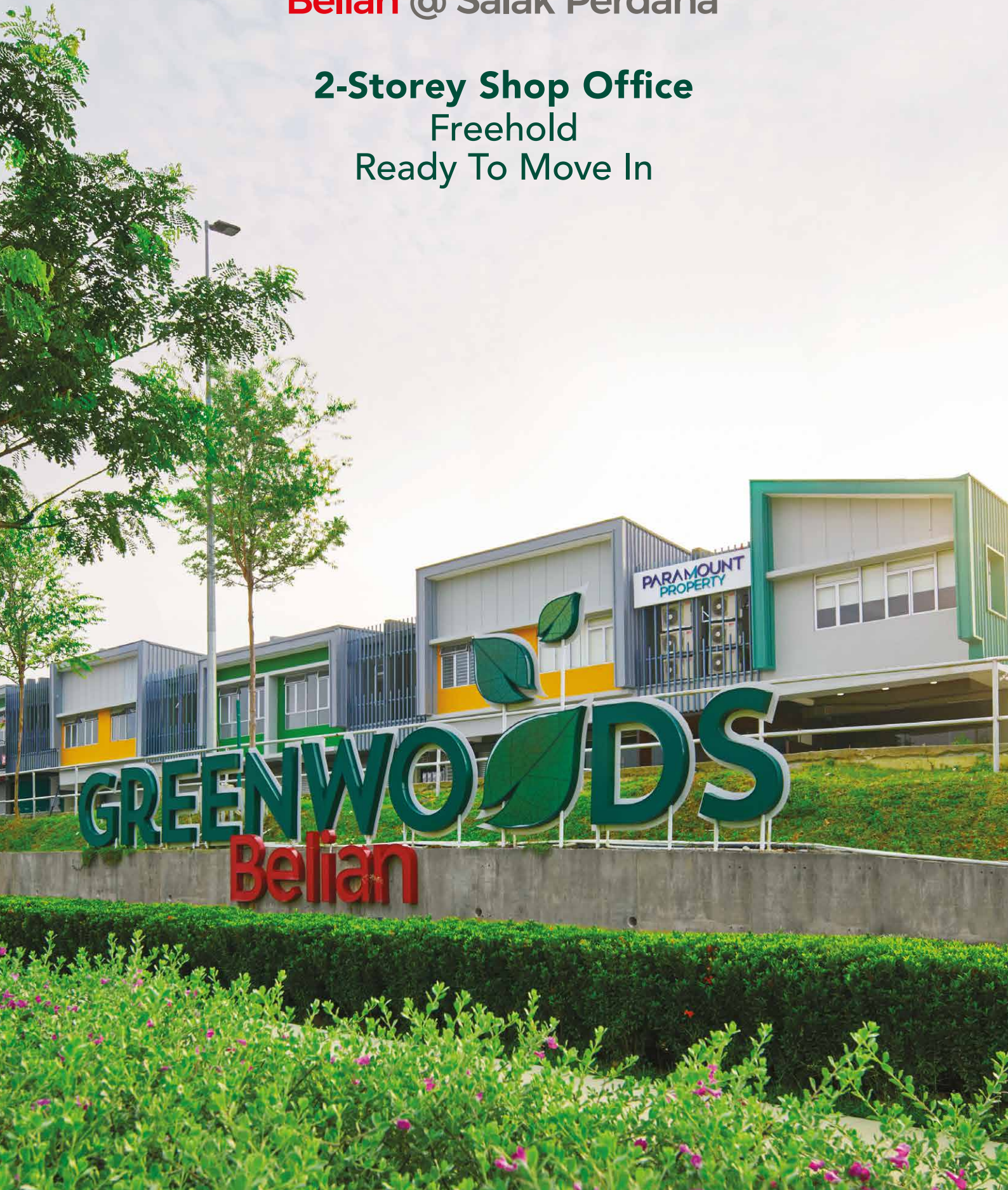
GREENWOODS

Belian @ Salak Perdana

2-Storey Shop Office

Freehold

Ready To Move In



GREENWOODS

Salak Perdana

Contemporary homes and commercial centres are pleasantly nestled within Greenwood's freehold township. Here, residents live amidst 237 acres of wide, open spaces, filled with tranquil parks, recreational pockets and a community farm that encourages all forms of activity and play. What's more, they also have their very own neighbourhood commercial hub, Greenwood's Belian, to cater to their daily needs. Greenwood's Salak Perdana is designed to be a place where residents come together and thrive as a community.



Master Plan

- | | | | |
|---|--------------------|----------------------|--|
| 1 Greenwood's Belian | 5 Keranji 2 | 9 Future Development | 13 Hill Park
- Jogging Track,
Biking Trail,
Recreational Park,
Hiking Trail,
Observation Deck
and Amphitheatre |
| 2 Community Pocket Farm and
Discovery Playground | 6 Primary School | 10 Mosque | |
| 3 96 Residences | 7 Secondary School | 11 Multipurpose Hall | |
| 4 Keranji | 8 Rumah Selangorku | 12 Recreational Pond | |



2-Storey Shop Office

Greenwoods Belian, Greenwoods' first commercial enclave is strategically located in the heart of this fast developing freehold township. Collectively, Greenwoods Belian is set for commercial growth and capital appreciation, as its well-thought out design will redefine the way business is done. It is truly an investor's dream, an opportunity to be part of a thriving commercial hub for Greenwoods' residents and its surrounding neighbourhoods.

- 47 exclusive units
- Now operational and ready to move in
- Adjoined to a community park
- Optimal main road frontage
- Functional & practical layouts for various businesses usage

CURRENT BUSINESS OPERATORS



TYPE A	20'x75'	3,000 sqft
TYPE B	24'x75'	3,599 sqft
TYPE C	28'x75'	4,068 sqft
TYPE D	20'x65'	2,600 sqft
TYPE E	28'x65'	3,494 sqft

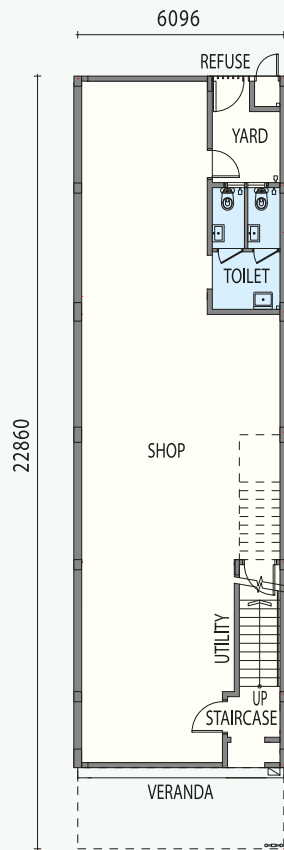


TYPE

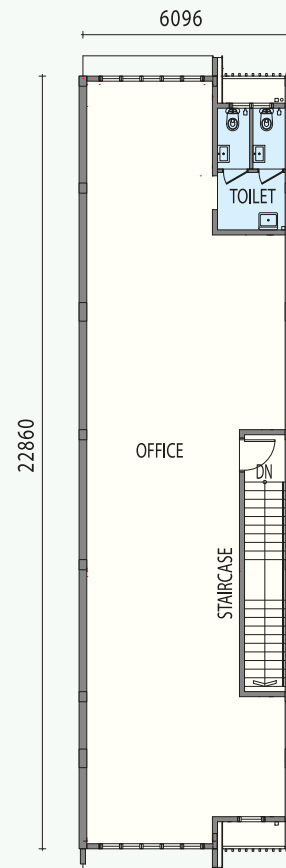
A1/A2

20' x 75'

—
3,000 sqft



GROUND FLOOR



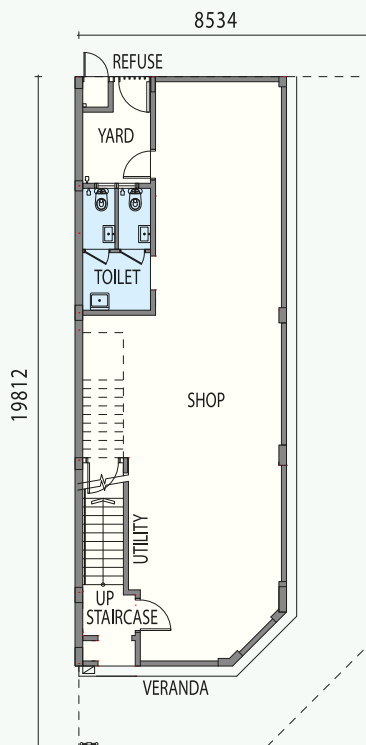
FIRST FLOOR

TYPE

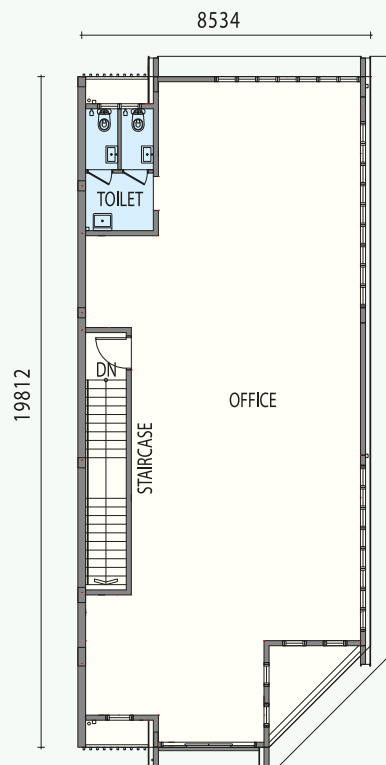
E

28' x 65'

—
3,494 sqft



GROUND FLOOR



FIRST FLOOR

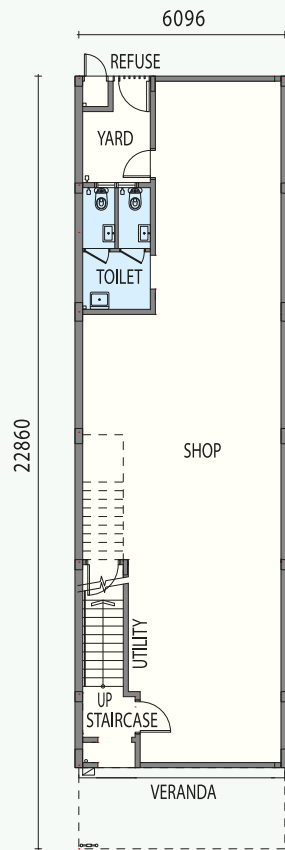
Floor Plan

TYPE

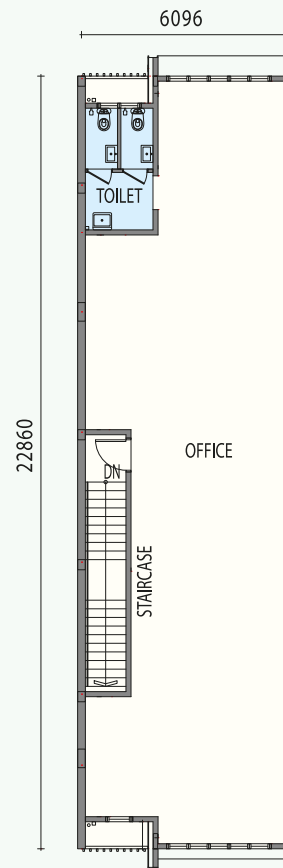
A1/A2

20' x 75'

3,000 sqft



GROUND FLOOR



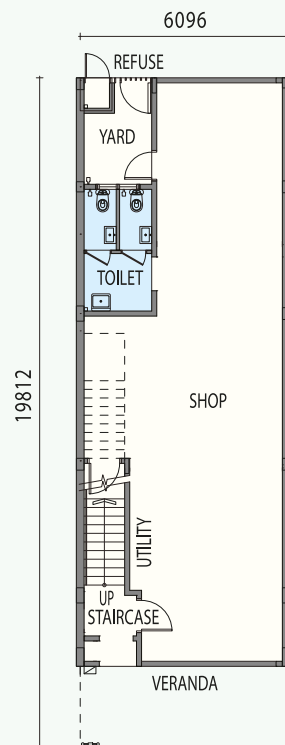
FIRST FLOOR

TYPE

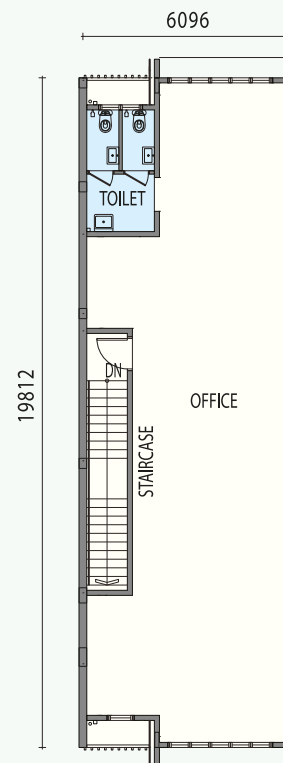
D1

20' x 65'

2,600 sqft

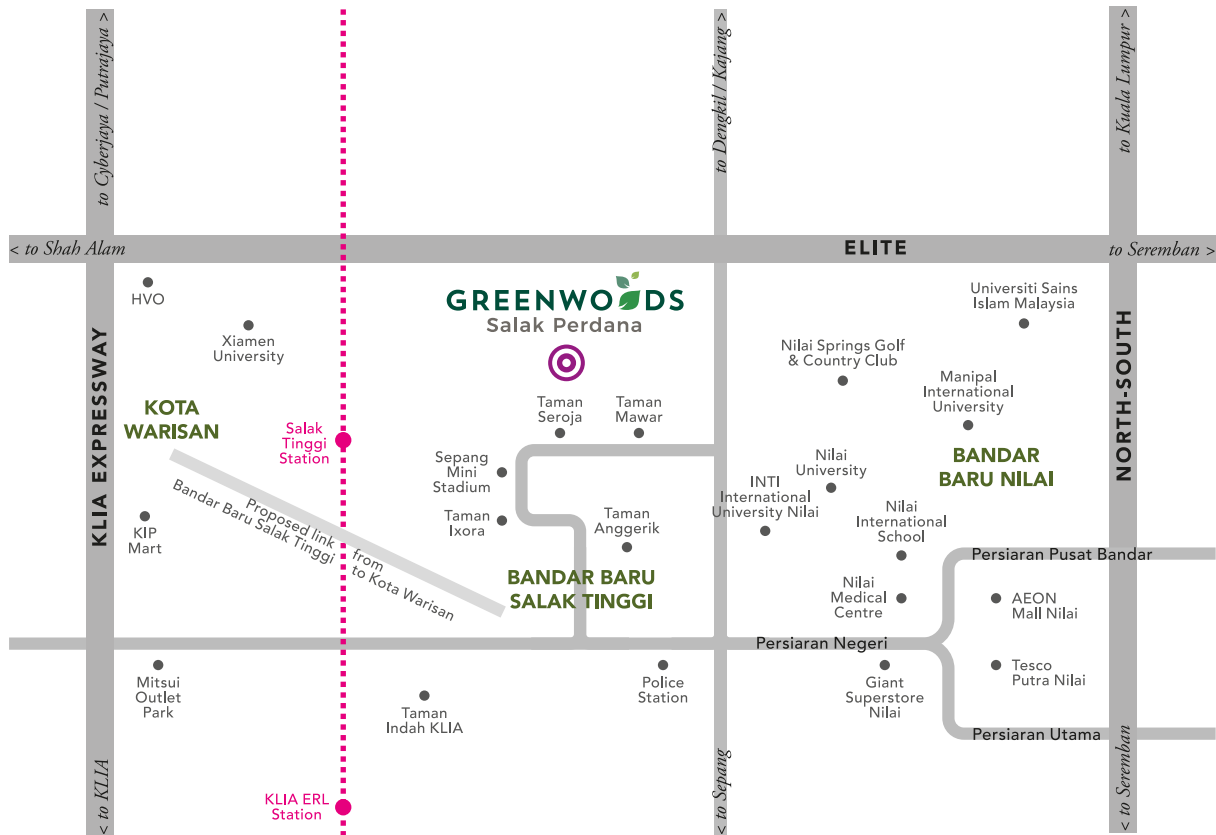


GROUND FLOOR



FIRST FLOOR

Access to Matured Neighbourhoods and Amenities



Highway & Public Transportation

ERL Salak Tinggi Station
 ELITE Highway
 North South Expressway
 KLIA Expressway
 KLIA

Supermarkets & Malls

Tesco Putra Nilai 8.4km
 Giant Superstore Nilai 8.8km
 AEON Mall Nilai 8.8km
 9 Avenue 8.8km
 MesaMall 10.6km
 KIP Mart 11.5km
 Mitsui Premium Outlet 14.3km

Schools & Higher Learning Institutions

SK KLIA 2km
 Smart Reader Kids Sepang 2.8km
 SMK Bandar Baru Salak Tinggi 3km
 UniKL MIAT 4km
 INTI International University Nilai 7.5km
 Nilai International School 9.6km
 Manipal International University 10.6km
 Universiti Sains Islam Malaysia 12.7km

Nearby Towns/Cities

Bandar Baru Salak Tinggi 5.7km
 Nilai 6.8km
 Kota Warisan 13.7km
 Dengkil 16km
 Bandar Seri Putra 17.2km
 Bandar Baru Bangi 21.4km
 Cyberjaya 22.3km
 Putrajaya 23km

ERL - KLIA Express and KLIA Transit



DEVELOPER : PARAMOUNT PROPERTY (SEPAANG) SDN BHD (1122275-W)
Paramount Property Gallery @ Greenwood Salak Perdana
 No.32A & 36, Jalan Belian 1, Taman Salak Perdana,
 Bandar Baru Salak Tinggi, 43900, Sepang, Selangor.
 ☎ WAZE : Paramount Property Gallery @ Greenwood Salak Perdana
 GPS Coordinates : 2,838838, 101,725941

012-422 9003

Facebook: ParamountPropertyMalaysia
 Instagram: paramountpropertymy

GREENWOODS
 Salak Perdana

PARAMOUNT
 PROPERTY